

ASIGN

INTRODUCTION

Harald Skinnemoen, Magnus Vikstrøm & Irene Seebacher

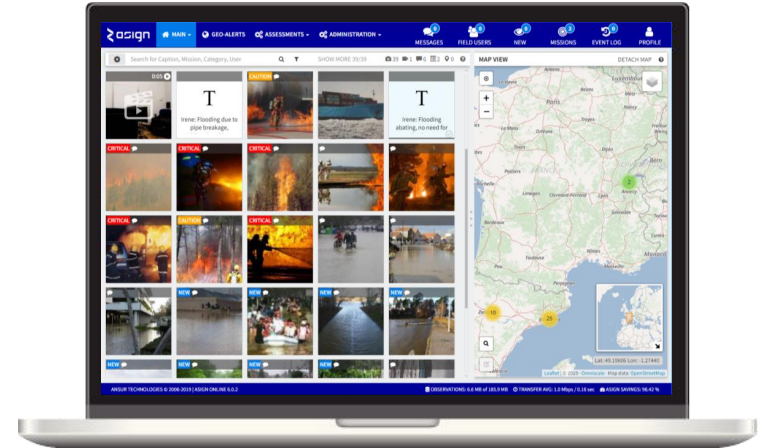
ASIGN

INTERACTIVE COMMUNICATION SOFTWARE OPTIMIZED FOR EFFICIENT COMMUNICATION
EVEN IN LOW-BANDWIDTH SCENARIOS.



ASIGN PRO

*Professional field data collection and
communication tool*



ASIGN Server

*Situational awareness portal &
Information Management*

ASIGN PRO

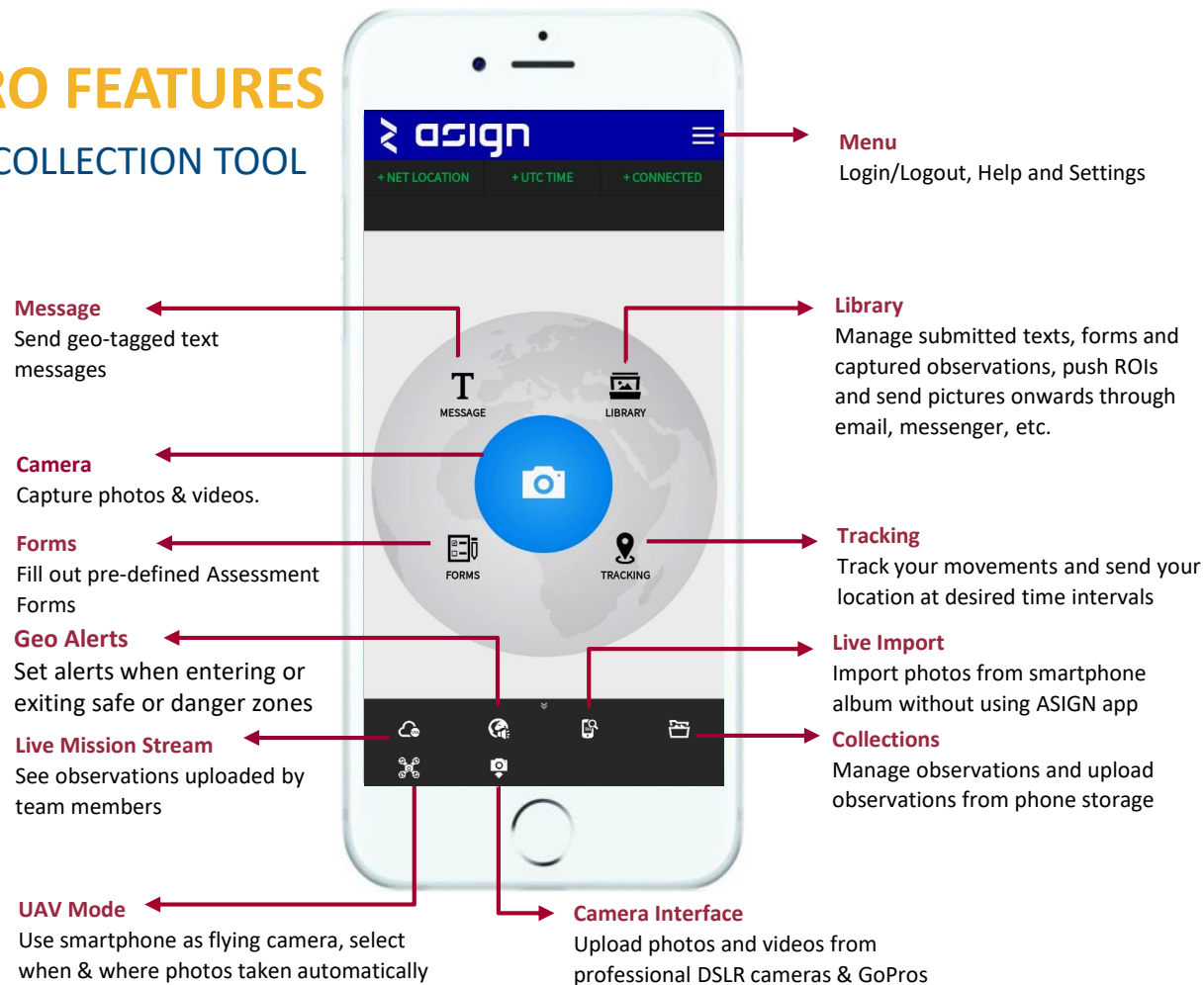
SENDING PRECISE PHOTOS AND VIDEO THROUGH ANY AVAILABLE NETWORK



- ✓ Optimized to communicate through radio networks, as well as Satellite Communication and TETRA/TEDs.
- ✓ Smart bandwidth optimization and special protocols enable communication from the field despite low bandwidth.
- ✓ Focus the available network on operationally relevant contents to communicate precise photos and videos with up to 99% less bandwidth
- ✓ Faster and more efficient communication for quicker and better situational awareness and decision-making

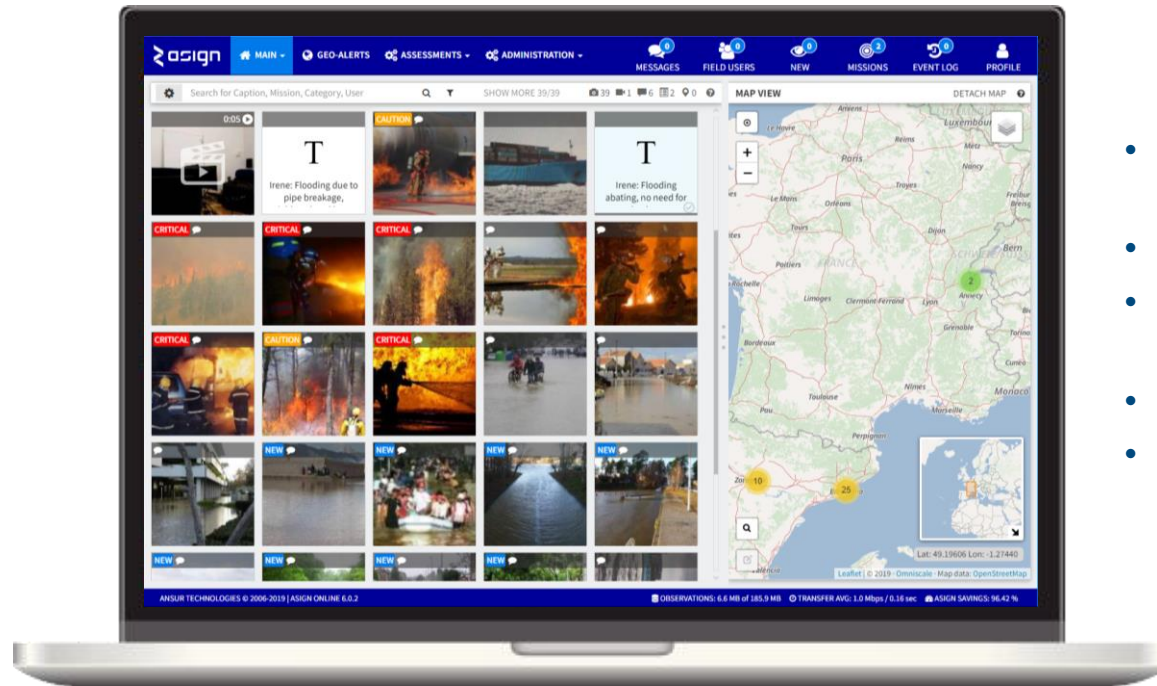
ASIGN PRO FEATURES

FIELD DATA COLLECTION TOOL



ASIGN SERVER

USER, MISSION & INFORMATION MANAGEMENT



- User & Mission Creation and Management
- Data filtering and analysis
- Pulling full-quality 'Regions of Interest'
- Geo-Alerts
- Exporting data onto further mapping platforms

ASIGN SERVER DASHBOARD

FILTER BY USER, MISSION, PRIORITY, CATEGORY, OBSERVATION TYPE AND LOCATION

The screenshot displays the ASIGN Server Dashboard interface. At the top, there is a navigation bar with the ASIGN logo and menu items: MAIN, GEO-ALERTS, ASSESSMENTS, and ADMINISTRATION. On the right side of the navigation bar, there are notification icons for MESSAGES (0), FIELD USERS (0), NEW (2), MISSIONS (0), EVENT LOG (8), and PROFILE.

Below the navigation bar, there is a search bar with the placeholder text "Search for Caption, Mission, Category, User". To the right of the search bar, there are icons for "SHOW MORE 10/0", a camera icon, a speech bubble icon, a location pin icon, and a help icon.

The main content area is divided into several sections:

- Left Sidebar:** Contains a "SAVE" button, a "SELECT CUSTOMIZED FILTER" dropdown, and several filter categories: PRIORITY, SHOW ONLY NEW OBSERVATIONS, CATEGORY, MISSION, USERS, TYPE / WITH, GEO-TAGGED, and DATE AND TIME.
- Observation Grid:** Displays a grid of observation thumbnails. Two thumbnails are labeled "Admin1: Mission One". One thumbnail shows a fire with a clapperboard icon and a "0:15" duration. Another thumbnail shows a helicopter. A "QUICK FILTERS" menu is overlaid on the grid.
- QUICK FILTERS Menu:** A white modal window with the following options:
 - Priority: Critical (red), Caution (yellow)
 - Not Seen:
 - Type / With: Photo, Regions, Audio Caption, Video, Clips, Audio Caption, Text, Assessment, Track
 - Geo-tagged: Any, With, Without
 - Date and Time: All, Last 24 hours, Last Week
- Map View:** A map of the Barcelona region, showing Sabadell, Badalona, and Barcelona. A green circle with the number "5" is visible on the map. The map includes a search bar, a zoom in/out button, and a "DETACH MAP" button. The map data is attributed to OpenStreetMap.

At the bottom of the dashboard, there is a status bar with the following information: ANSUR TECHNOLOGIES © 2006-2019 | ASIGN ONLINE 5.12.3, OBSERVATIONS: 341.2 KB of 10.1 MB, TRANSFER AVG: 841.5 Kbps / 0.31 sec, ASIGN SAVINGS: 96.72 %.

INTEGRATION WITH DRIVER+ SOLUTIONS

In the past, ASIGN has been successfully integrated into mapping platforms such as the UNOSAT GDACS Live maps.

Within DRIVER+:

- ✓ Photos taken by ASIGN PRO users can be sent automatically from the ASIGN platform to the viewTerra earth viewer.
- ✓ Mission can be automatically sent to viewTerra and Crowdtaskr

CONTACT

REACH US



@driver_project



Groups:
Driver Project



Driver Project

Project Director - Peter Petiet peter.petiet@tno.nl

Project Technical Coordinator - Marcel van Berlo marcel.vanberlo@tno.nl

External Cooperation Manager - Michael Löscher loescher@arttic.eu



This project has received funding from the European Union's Seventh Framework Programme for research, technological development and demonstration under grant agreement n° 607798. The information and views set out in this presentation are those of the author(s) and do not necessarily reflect the official opinion of the European Union

